



719-694-3082

Whispering Hills

260 Rim View Dr. Colorado Springs, CO 80919

www.aptsetc.com/whisperinghills



OFFICE HOURS
M-F: 8:30-5:30 Sat: 10-5 Sun: Closed

PRICING INFORMATION

SIZE	PRICE	DEPOS	SQ.FT.
1BD/1BA	696-778	87.5NR	737*
1BD/1BA	663-715	87.5NR	794*
2BD/2BA	865-885	87.5NR	927*
2BD/2BA	800-850	87.5NR	974*
2BD/2BA	931-951	87.5NR	1017*
2BD/2BA	876-927	87.5NR	1062*

*full size washer/dryer connections
*Deposits are \$500 refundable or \$87.50 Non-refundable
Prices Subject To Change

UTILITIES
Resident pays all

UNIT AMENITIES

- Ceiling Fans*
- Elc Range
- Wood FP
- Refrigerator
- Dishwasher
- Disposal
- *not available in all units

COMMUNITY AMENITIES

- Outdoor Pool
- Hot Tub
- Laundry Center
- Sauna
- Clubhouse
- Fitness Center
- Video Library

PARKING INFORMATION

Off Street

PET INFORMATION

Call for breed restrictions
Dogs Allowed: 2/ Cats Allowed: 2
Maximum Pets Allowed: 2
Pet Deposit: \$150
NR Pet Fee: \$150
Pet Rent: \$25 mo per pet
Weight Limits: None

F.Y.I.

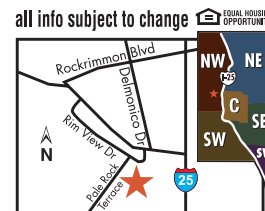
Application Fee: \$45
Administration Fee: \$150
Leases: 3ML-12ML
Number of Units: 216
Mgmt. Co: Alliance Residential

SCHOOLS

School District: 20
Elementary: Foothills
Middle School: Eagleview
High School: Air Academy

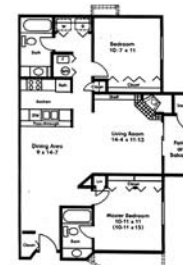
DIRECTIONS

Traveling north or south on I-25, turn on Exit 147, go north to Rokrimmon Blvd., turn west on Rockrimmon Blvd.

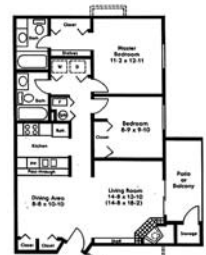


Floor Plans

1 bed/1 bath



2 bed/2 bath



2 bed/2 bath